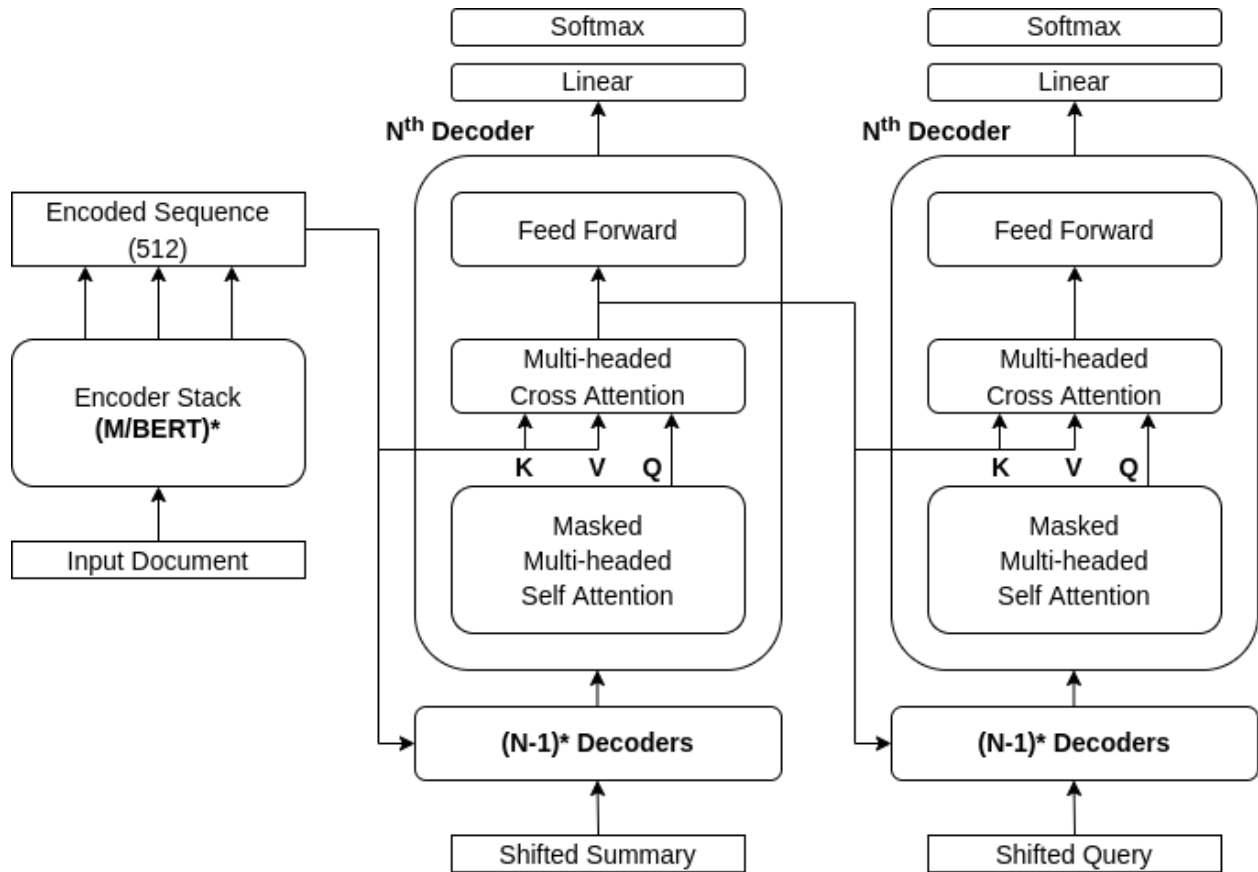


Dual-View Hierarchical Joint Model for Summarization and Summary focused Query Generation



* subject to experiment/hyper-parameter

Loss Function (Cross-Entropy Loss):

$$L = L_s + \lambda L_q \quad [\lambda \text{ is a hyper-parameter}]$$

Advantages:

- Single model for both Summarization and Query Generation.
- Expected to get better results than individual models. *[hypothesis]*

Challenges:

- Limited resource.
- Can be a problem for longer documents. *[can be addressed via multi-window or something like that...]*
- Might be expensive compared to single models. *[can be solved by tuning hyper-parameter N]*

Motivation:

- <https://proceedings.mlr.press/v95/wang18b.html>
- <https://arxiv.org/abs/1805.01089>
- <https://arxiv.org/abs/2110.05036>